

MONTHLY MEMBERSHIP PROGRESS REPORT

LOCATION REP OF GHANA

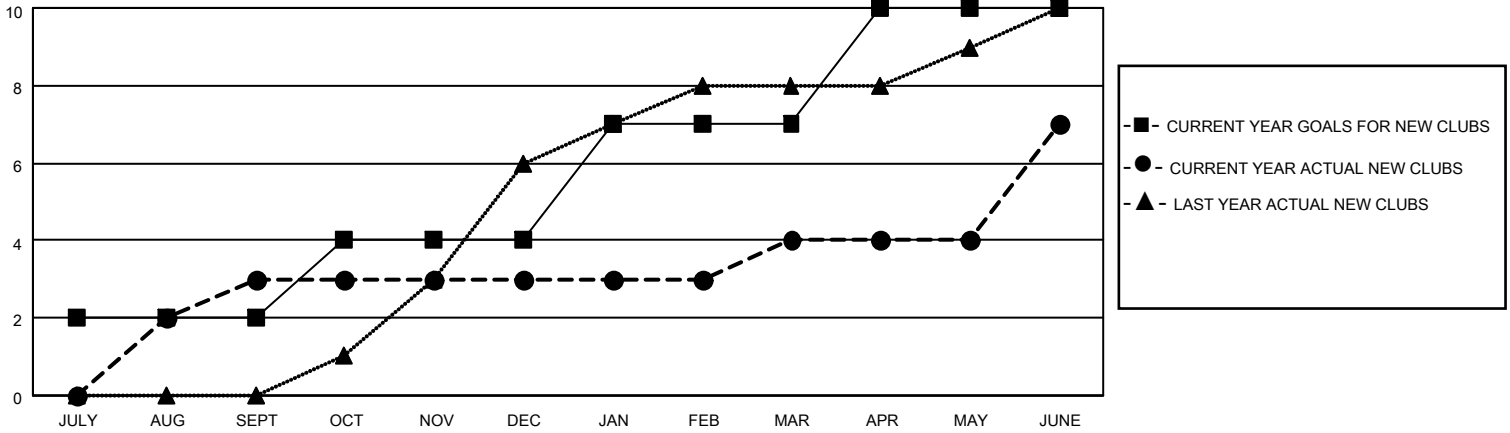
District 418

Results as of: 6/30/2022

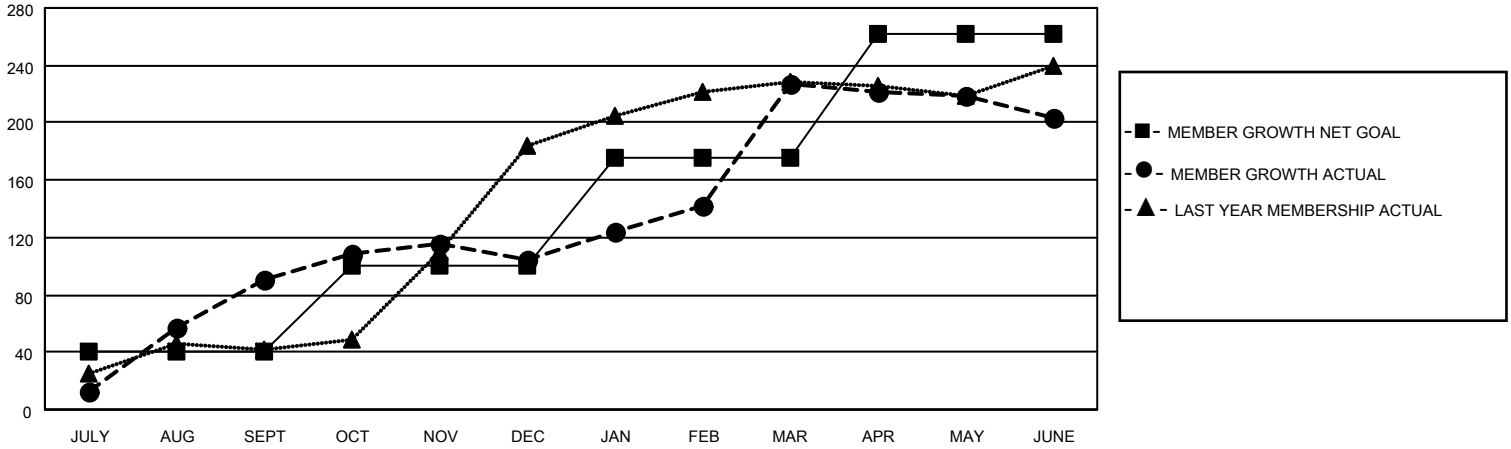
Clubs			
RESULTS FOR 2021-2022			
QUARTER	NEW CLUB GOAL	NEW CLUBS	DROPPED CLUBS
JULY/AUG/SEPT	2	3	0
OCT/NOV/DEC	2	0	0
JAN/FEB/MAR	3	1	0
APR/MAY/JUNE	3	3	1

Members			
RESULTS FOR 2021-2022			
QUARTER	MEMBER GROWTH NET GOAL	MEMBER GROWTH ACTUAL	DROPPED MEMBERS ACTUAL (including transfers)
JULY/AUG/SEPT	40	113	19
OCT/NOV/DEC	60	103	90
JAN/FEB/MAR	75	138	9
APR/MAY/JUNE	87	139	160

GOALS AND ACTUAL NEW CLUBS CUMULATIVE



GOALS AND ACTUAL MEMBERS CUMULATIVE



DROPPED CLUBS: 1	
DROPPED MEMBERS	
DECEASED	2
CLUB CANCELLED	11
OTHER	265
TOTAL	278

41 CLUBS OF 44 ADDED 1 OR MORE NEW MEMBERS

[CLICK HERE FOR CUMULATIVE MEMBERSHIP DATA](#)

<u>GENDER DISTRIBUTION</u>	
MALE	746 (60.36%)
FEMALE	490 (39.64%)
NON BINARY	0 (0.00%)
PREFER NOT TO ANSWER	0 (0.00%)
TOTAL FAMILY UNIT MEMBERS	18
FAMILY MEMBERS PAYING HALF DUES	9